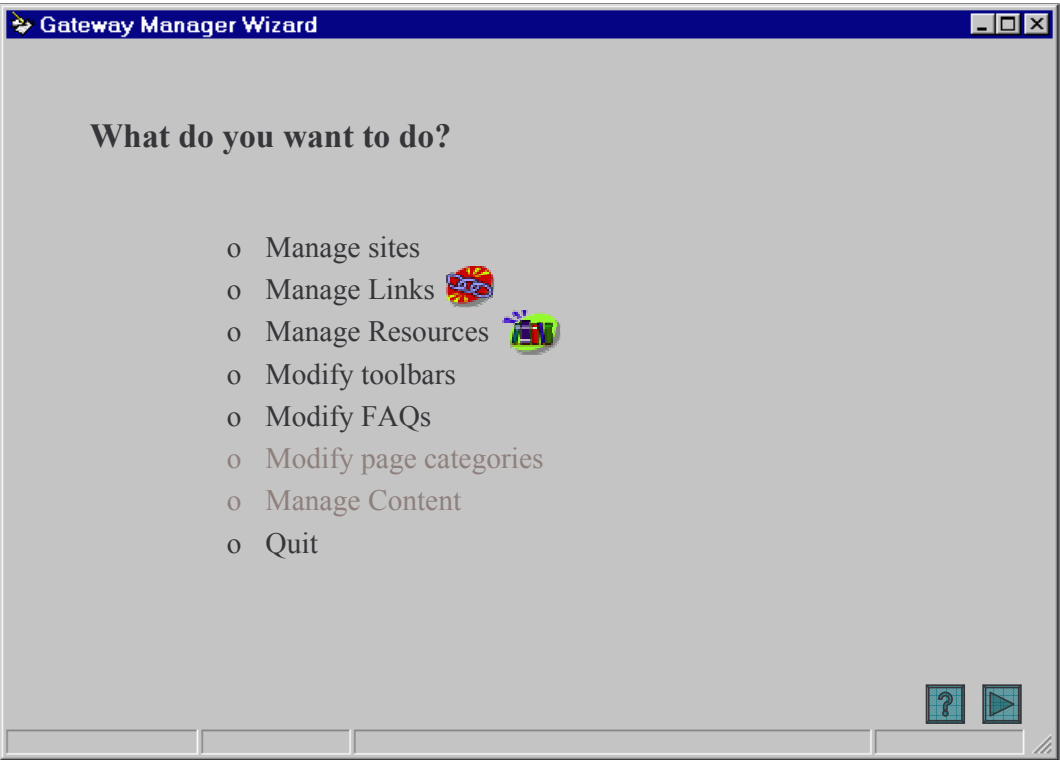




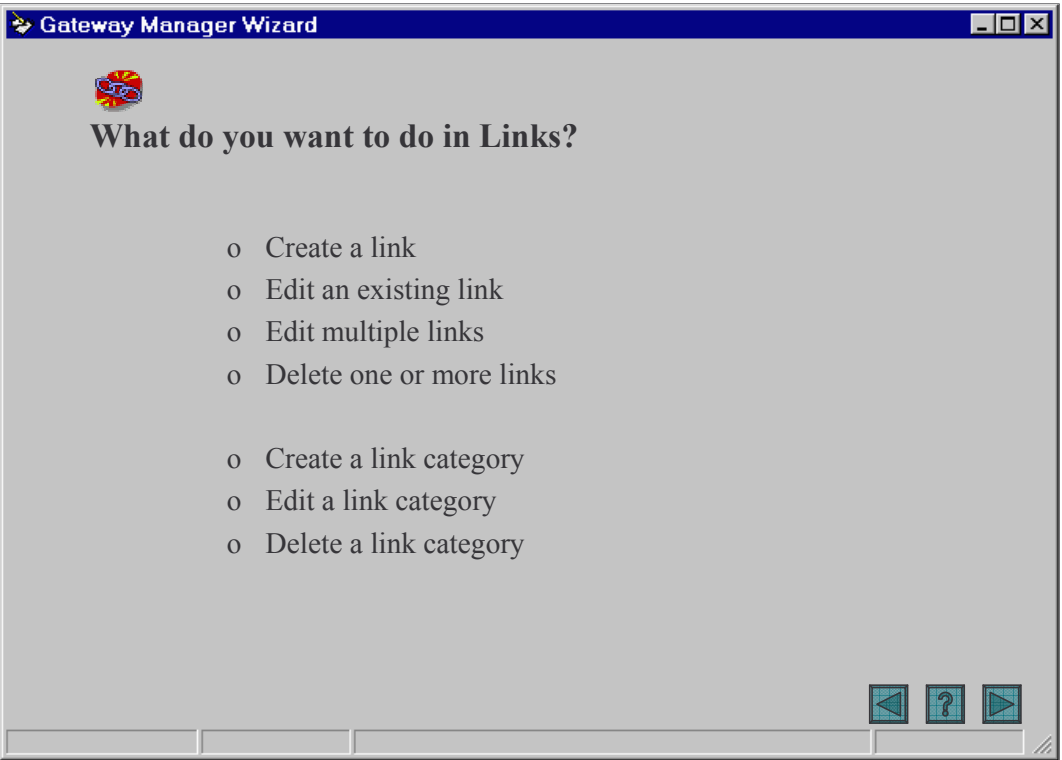
This page would not be part of the application.



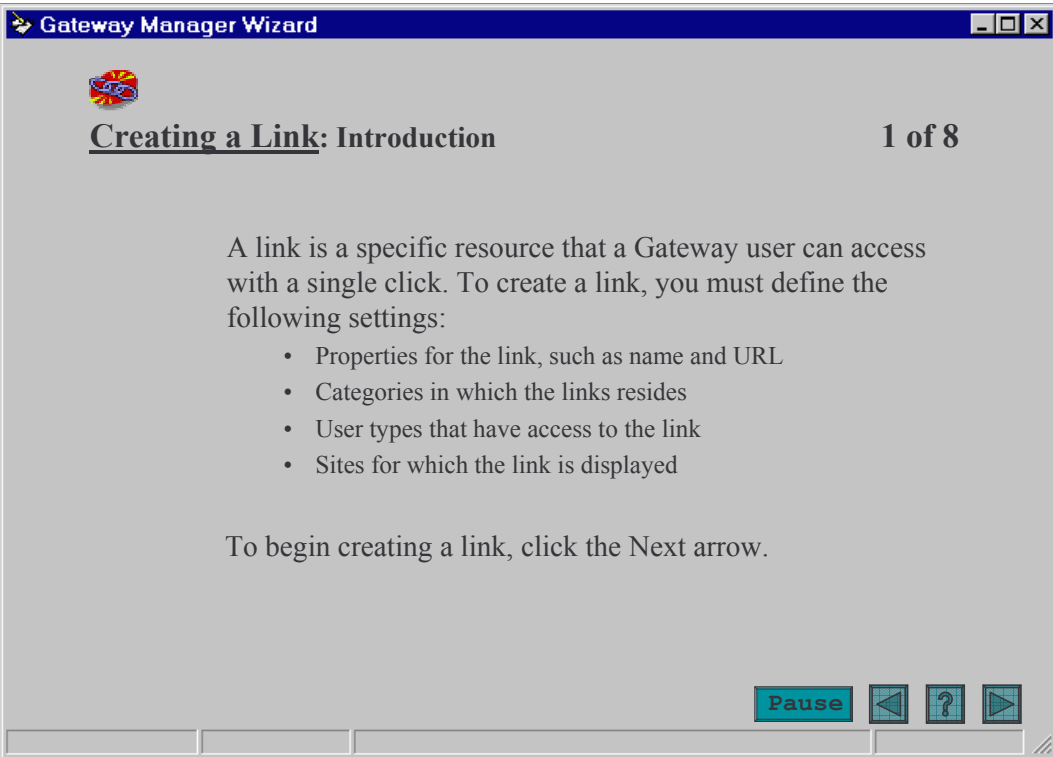
This screen could be “turned off” when the user chooses the Advanced User option. But where do we put options? Will this application have menus? Maybe add an “o” button to the left of the Min, Max, and Close buttons? The database selection field is borrowed from Site Manager. Won’t users be modifying databases in Development, QC, and Production? Of course, we could make the db selection part of the installation. And we could disable this field for certain users.



“Modify categories” is not available for this user.




We could get rid of radio buttons throughout and replace them with action buttons (at least, on screens like this).



Either take this screen out of the sequence or get very fancy and add a user level option that eliminates tutorial screen such as this one (“easy” and “advanced” settings, with the default install setting being “easy”). But then this screen couldn’t be numbered “1 of 7.” Do we want to have a Pause button throughout? What if the user gets all the way through and the database connection dies? Is all the work lost? Not with a Pause or Save button.

Gateway Manager Wizard



## Creating a Link: Define Properties

2 of 8

Enter the properties for the link. Then click the Next arrow.

\* URL

\* Name

\* Tooltip

Company

Description

Notes

Navigation icons: Previous, Help, Next

Do we really need the company and description fields? Asterisks represent required info.



## Creating a Link: Select Categories

3 of 8

Select the link categories in which you want the link to appear. Then click the Next arrow.

- Arts
- Education News
- Education Organizations
- Educational Community
- ESL
- ExternalinfoURL
- Marco Polo
- Math
- News Sites
- Newspapers
  - Education
  - Magazines
  - National
  - State/Local
- Personal Interest





## Creating a Link: Choose User Types

4 of 8

Select the user types for whom you want the link to appear. Then click the Next arrow.

All

- Student
  - Pre-K - 2
  - 3-5
  - 6-8
  - 9-12
- Parent
- Teacher
- Admin

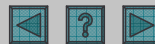
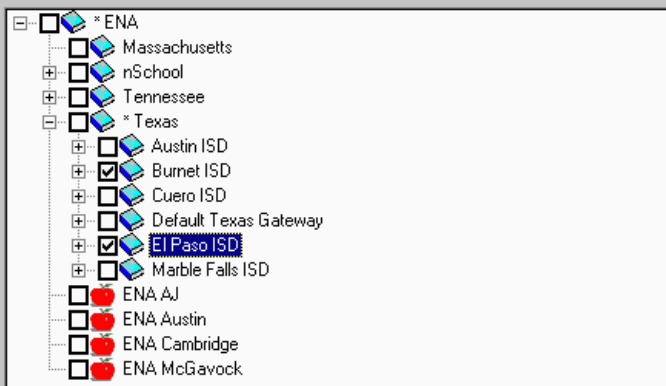


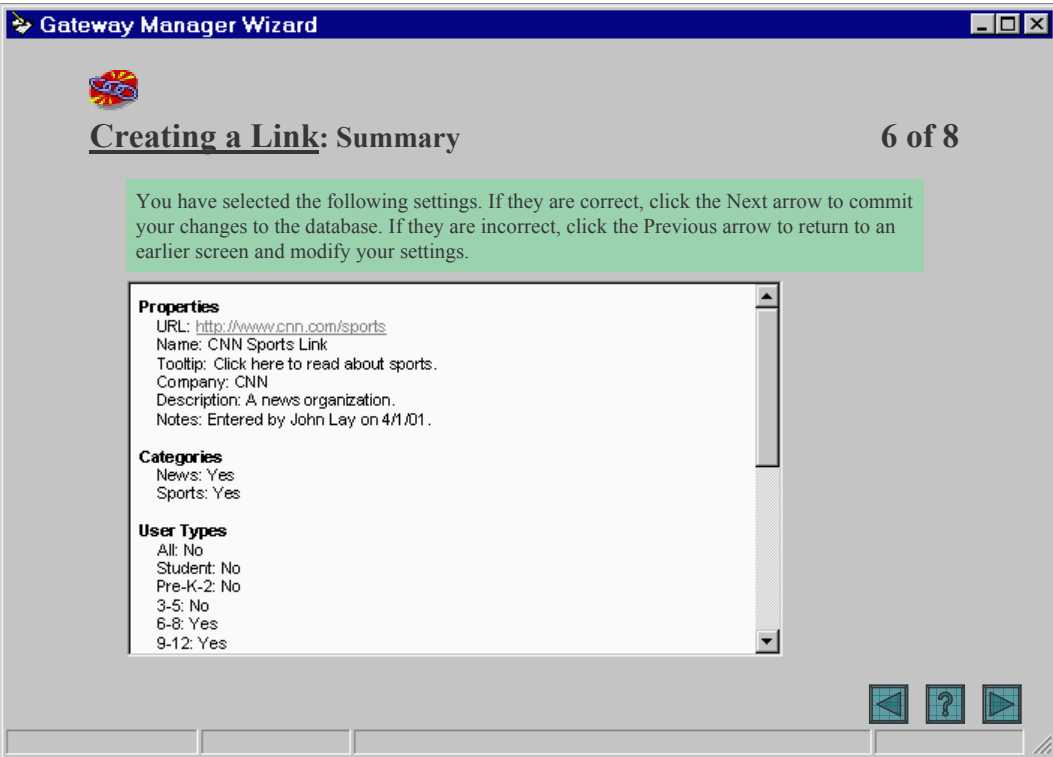


## Creating a Link: Select Sites

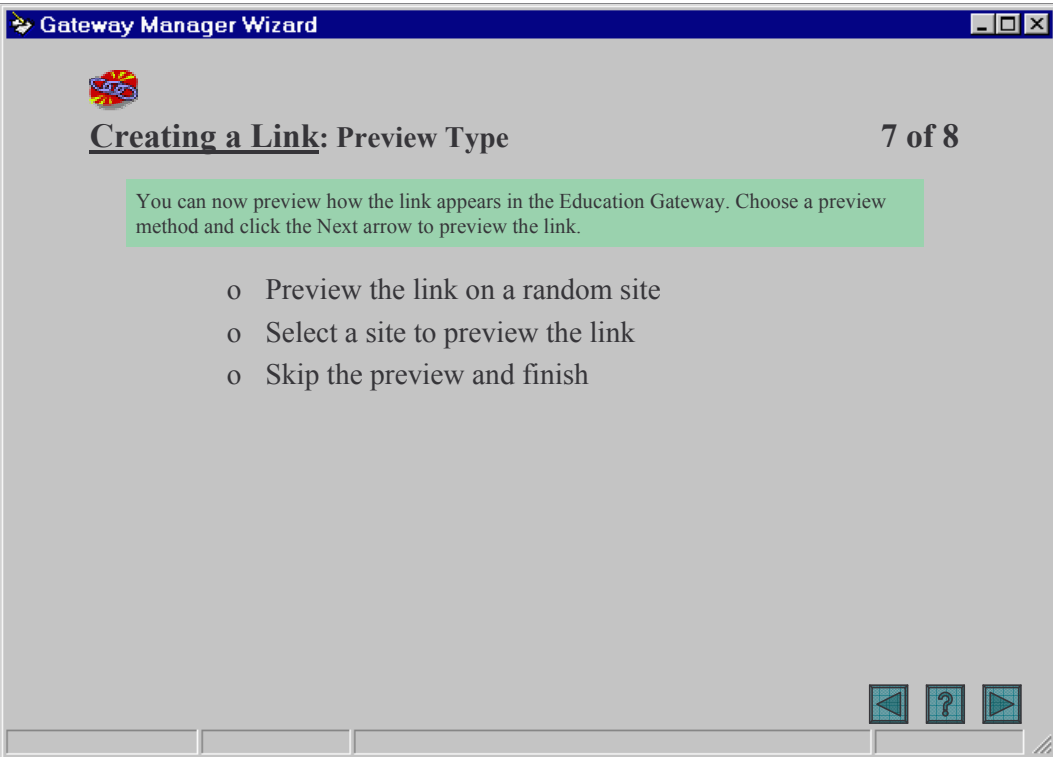
5 of 8

Select the sites for which you want the link to appear. Then click the Next arrow.





The hyperlink in the above picture is from Word. Should we have a hyperlink here? It might be useful to preview a link in my browser (as opposed to ENA Preview).



If the user selects “select a site,” a screen for selecting would be inserted. If the user selects “skip,” he or she is taken to the first screen in the wizard (actually the second, “What do you want to do?”).



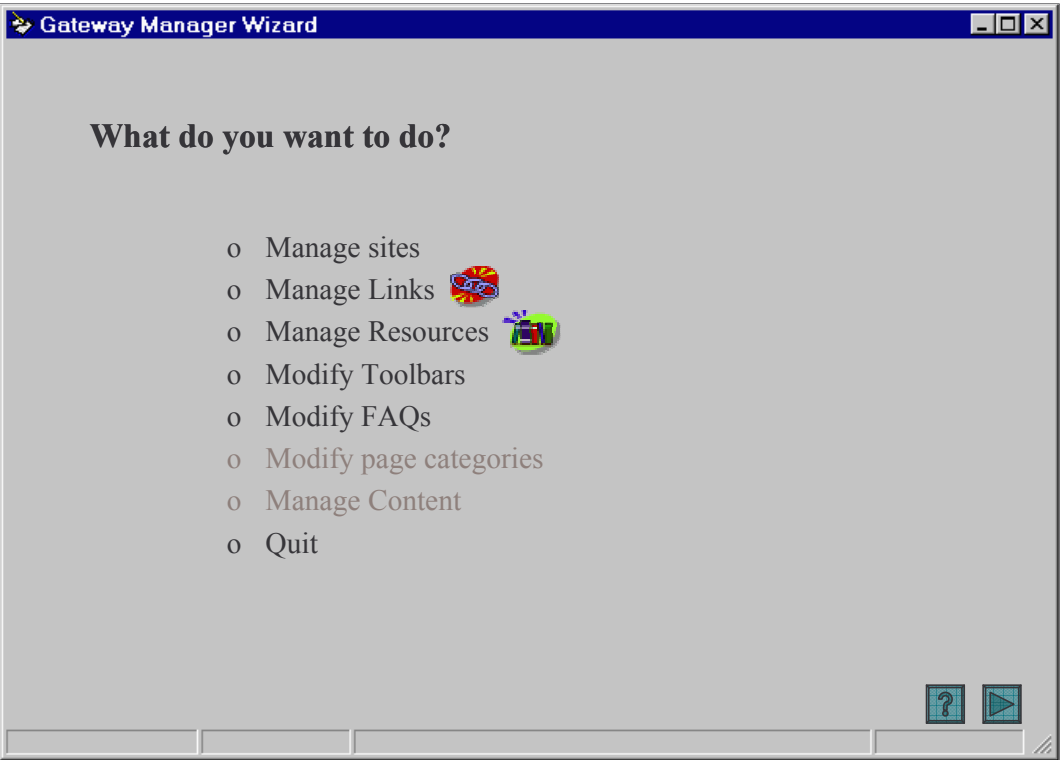
## Creating a Link: Preview

8 of 8

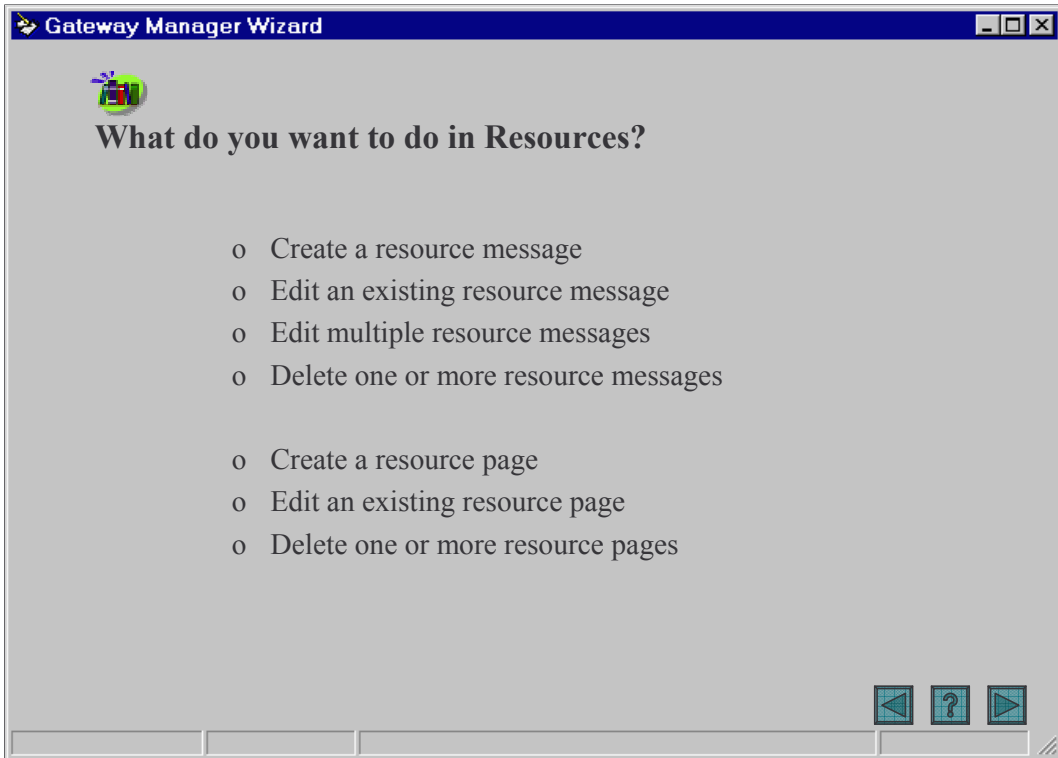
**Student's Links** Teacher's Links Administrator's Links

<b>Arts</b>	<b>Tennessee</b>	<b>Guidance</b>
<a href="#">Art History</a>	<a href="#">State of Tennessee</a>	<a href="#">The College Board</a>
<a href="#">A NEW LINK</a>	<a href="#">Home Page</a>	<a href="#">FAFSA on the Web</a>
<a href="#">Play Music</a>	<a href="#">Tennessee Blue Book</a>	<a href="#">Fast Web</a>
<a href="#">Sapphire Swan Dance</a>	<a href="#">Tennessee Supreme</a>	<a href="#">Test U</a>
<a href="#">Essentials of Music</a>	<a href="#">Court</a>	<a href="#">Test Taking</a>
<a href="#">K-12 Music Resources</a>	<a href="#">Tennessee General</a>	<a href="#">Teen Central</a>
<a href="#">www.myurl.com</a>	<a href="#">Assembly</a>	<a href="#">Teen Advice Online</a>
<b>Newspapers</b>	<b>Math</b>	<a href="#">School Violence</a>
<a href="#">texas paper</a>	<a href="#">TI-Calculator Program</a>	<a href="#">Nat'l Crime Prevention</a>
<a href="#">New York Times</a>	<a href="#">Archive</a>	<a href="#">Council</a>
		<a href="#">Eating Disorders</a>
		<a href="#">Idealist</a>

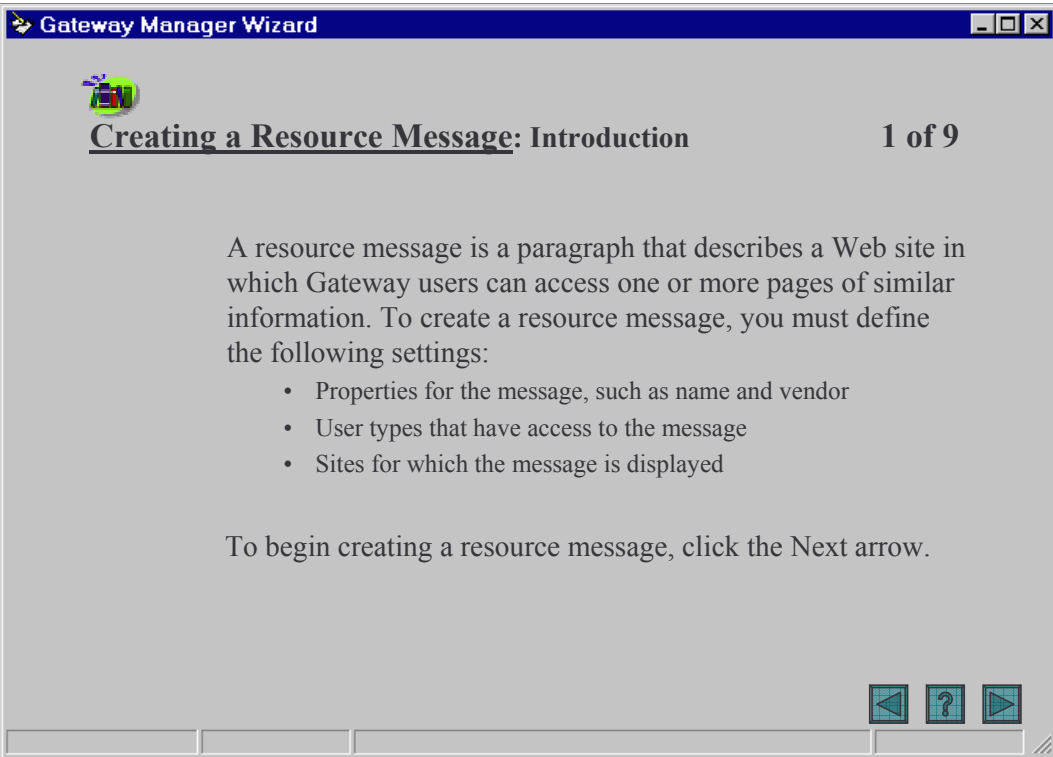




Or we could return to the sublevel screen: For example, “What do you want to do in links?”

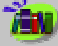


Add sequence title to the app title bar would save screen space. Could move “1 of 8” to the title bar, too.



Either take this screen out of the sequence or get very fancy and add a user level option that eliminates tutorial screen such as this one (“easy” and “advanced” settings, with the default install setting being “easy”). But then this screen couldn’t be numbered “1 of 7,” unless we can have the app automate that, based on the user’s Options settings.

Gateway Manager Wizard

 **Creating a Resource Message: Define Vendor Info** 2 of 9


Enter the information for the vendor. The vendor is the company that provides the resources. Then click the Next arrow.


\* Company

\* Description

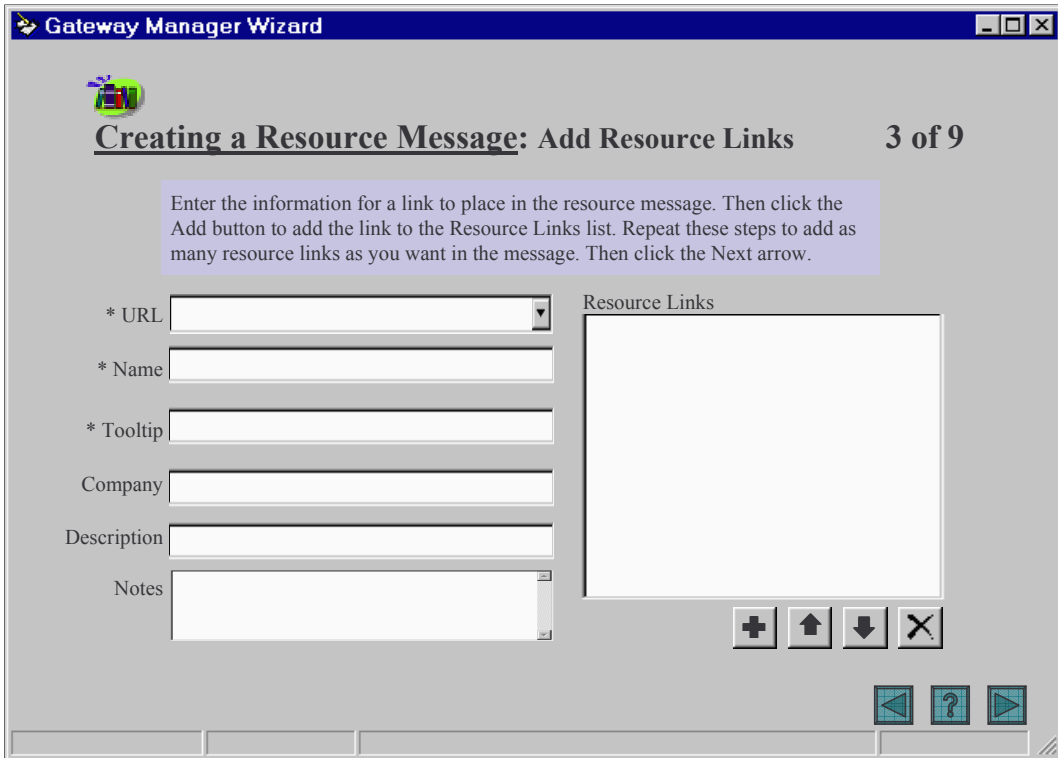
URL

Image  Notes

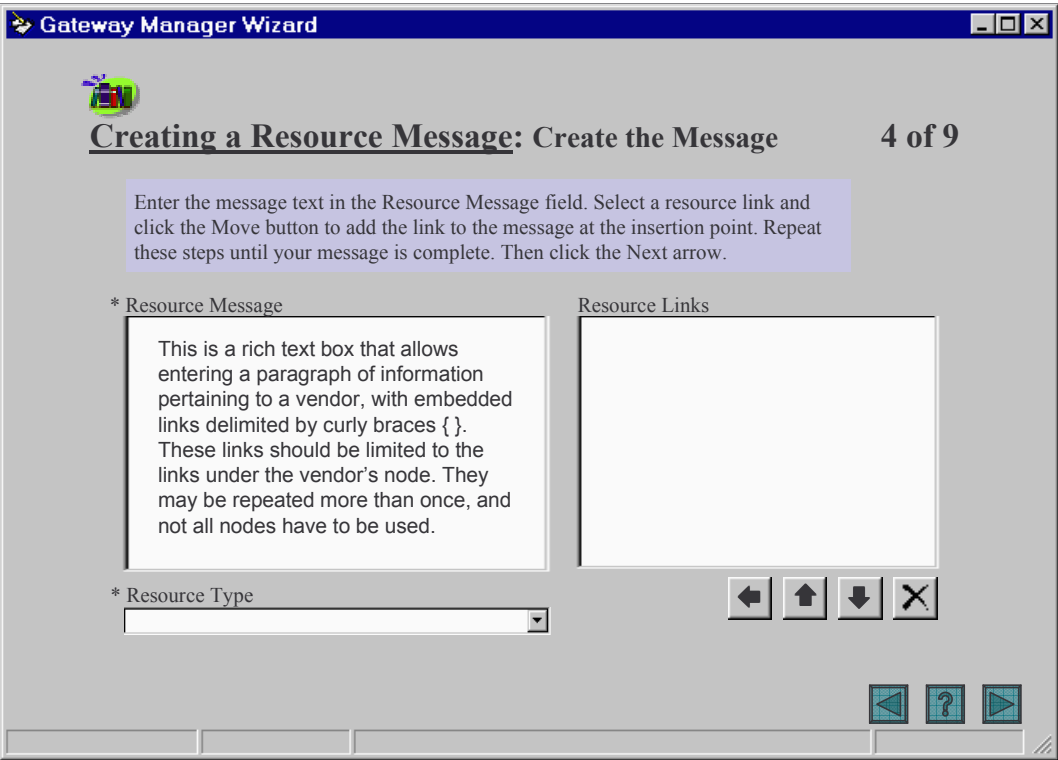




There might be a problem here: Do we need to add a Browse button when a user wants to create a new image. What happens if I want to edit an image? Is that a separate sequence? Or a separate window? For the Edit version of this screen (and maybe for the Create version, too), the image would be displayed beneath the image field.



The user enters the content URL info in the left-side fields, then click the Add button to add the content URL to the list. The Add button becomes available only when all the required fields are populated. The user can select a content URL in the list and click the Delete button to remove it (from this resource message record); the delete button isn't available until a link is selected. The two black arrow buttons are for reordering the resource links list, but maybe that isn't necessary.



In this screen, the black left arrow moves a resource link to the left message area.



## Creating a Resource Message: Choose User Types

5 of 9

Select the user types for whom you want the message to appear. Then click the Next arrow.

All

- Student
  - Pre-K - 2
  - 3-5
  - 6-8
  - 9-12
- Parent
- Teacher
- Admin

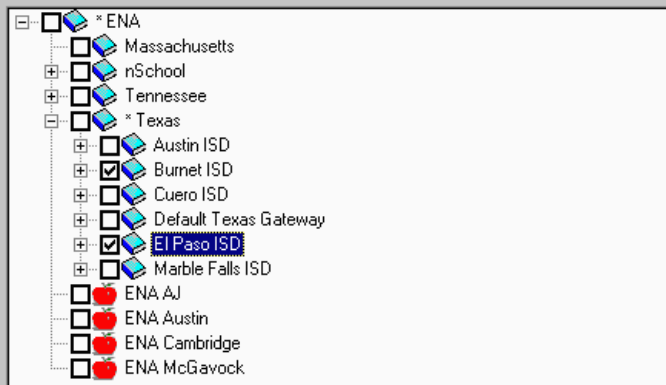


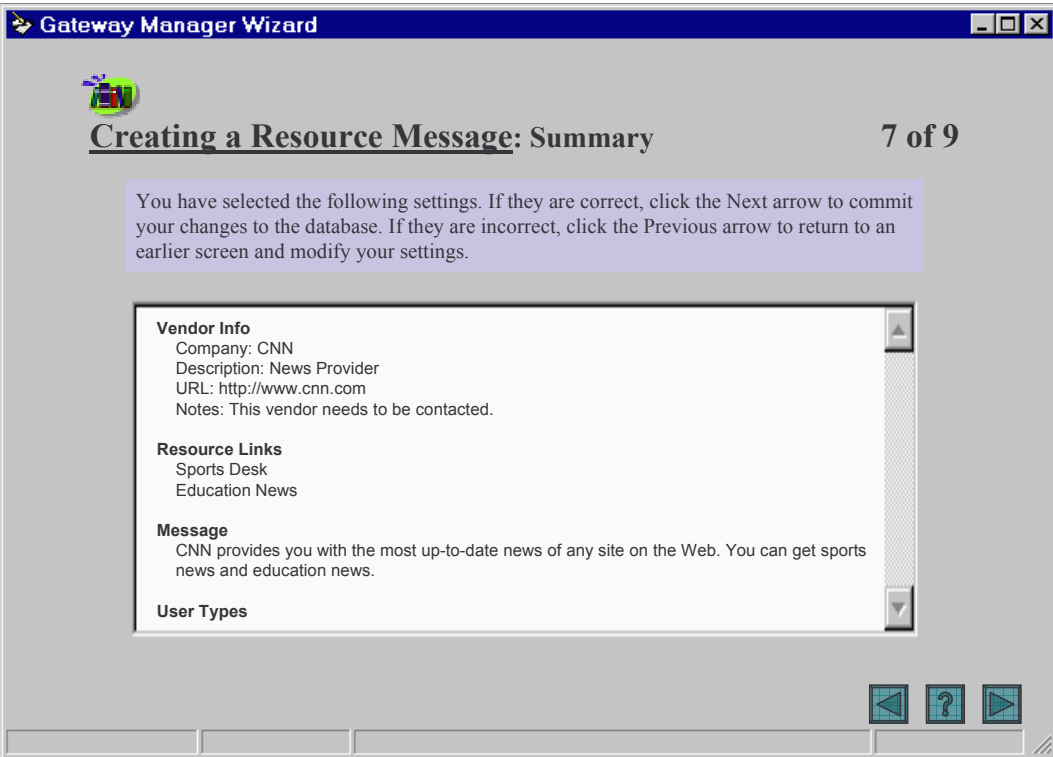


## Creating a Resource Message: Select Sites

6 of 9

Select the sites on which you want the message to appear. Then click the Next arrow.





The hyperlink in the above picture is from Word. Should we have a hyperlink here? It might be useful to preview a link in my browser (as opposed to ENA Preview).



## Creating a Resource Message: Preview Type

8 of 9

You can now preview how the message appears in the Education Gateway. Choose a preview method and click the Next arrow to preview the link.

- Preview the message on a random site
- Select a site to preview the message
- Skip the preview and finish






If the user selects “select a site,” a screen for selecting would be inserted. If the user selects “skip,” he or she is taken to the first screen in the wizard (actually the second, “What do you want to do?”).



## Creating a Resource Message: Preview

9 of 9

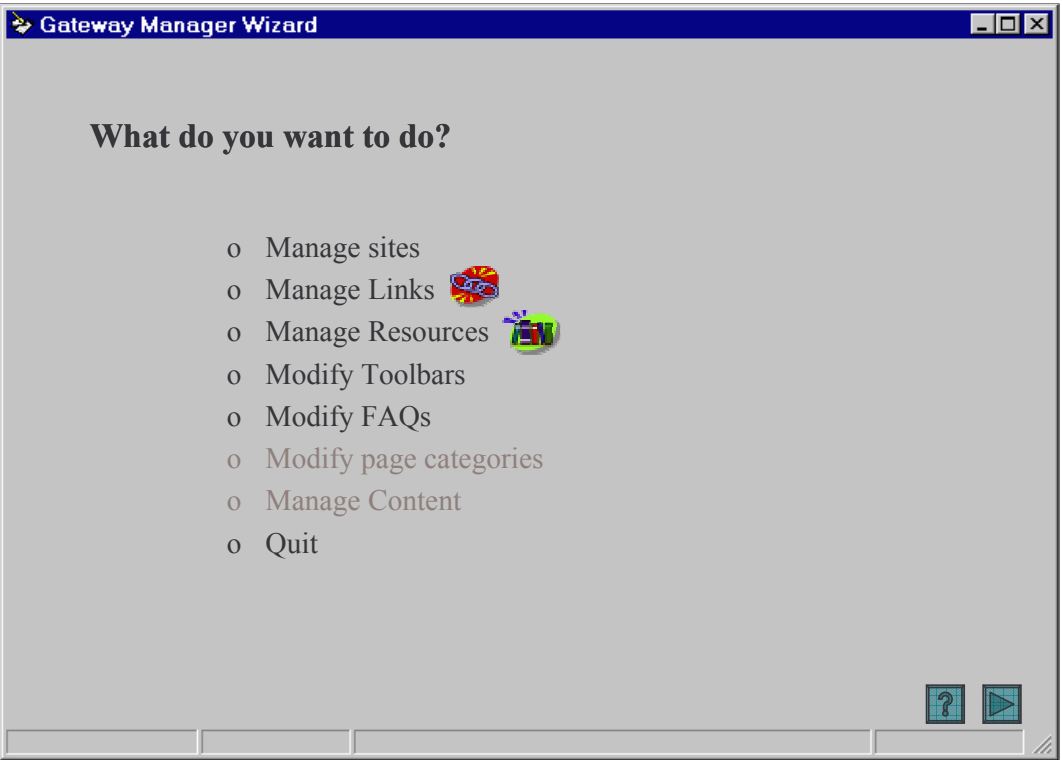
 **Student's Resources**  Teacher's Resources  Administrator's Resources

**Available For Use**

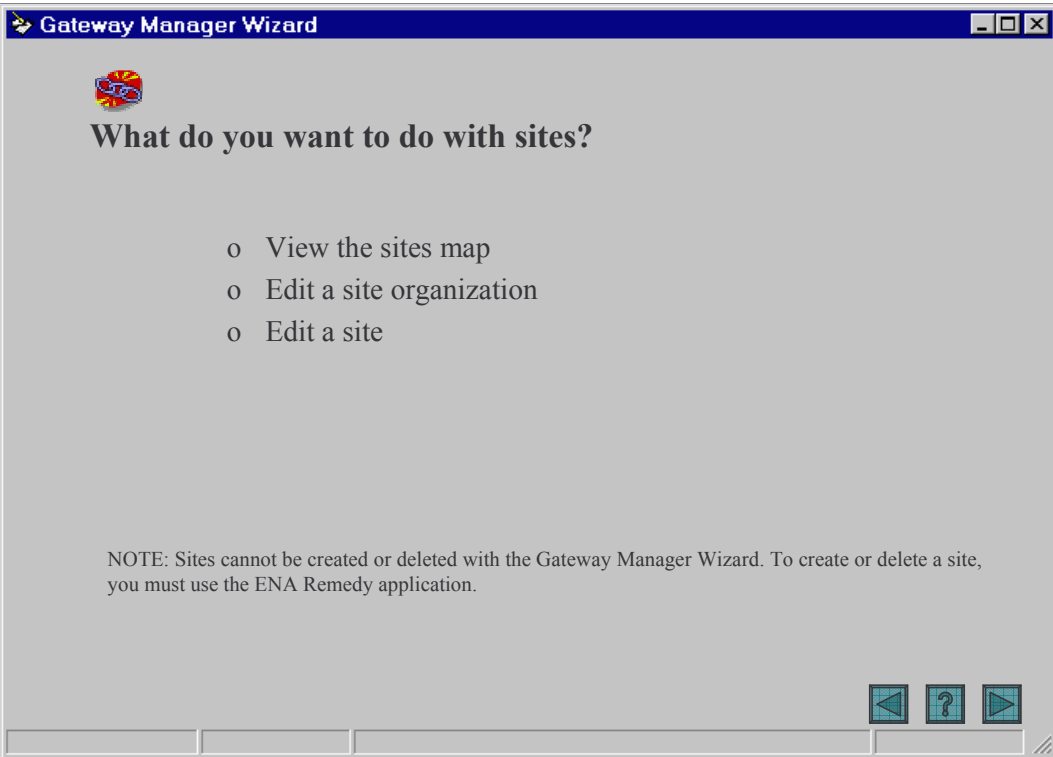
**These resources are not available to the general public and have been acquired specifically for you by ENA, your district or your state.**

<input checked="" type="checkbox"/> Britannica	<a href="#">Britannica Online</a> , Britannica's premium encyclopedia, offers "printer-friendly" articles, no advertising, easily copied references for bibliographies, powerful search features and more. Britannica Intermediate Encyclopedia, geared to a lower reading level than Britannica Online, is perfect for elementary school researchers.
--	--

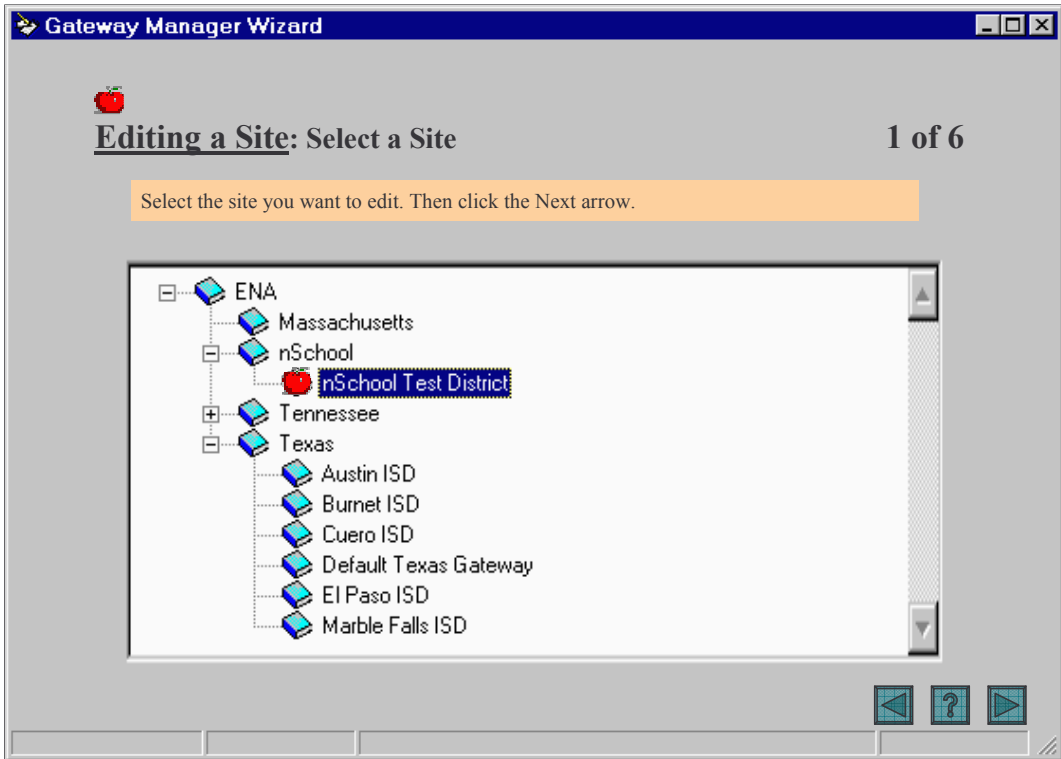




Or we could return to the sublevel screen: For example, “What do you want to do in links?”




Could cut the first option “View” option, since the next screen for either of the other options should be the view screen.



Either take this screen out of the sequence or get very fancy and add a user level option that eliminates tutorial screen such as this one (“easy” and “advanced” settings, with the default install setting being “easy”). But then this screen couldn’t be numbered “1 of 7.”

Gateway Manager Wizard

 **Editing a Site: Select an Affinity URL for “nSchool” site** 2 of 6

Select or enter information about the site’s URL. A URL is used to locate a site in the network ???. Then click the Next arrow.

\* URL




\* Name

\* Tooltip

Company


Description

Notes

But these fields should already be filled in, shouldn't they? When a site is created in Remedy, isn't all this info entered into the db?

**Gateway Manager Wizard** \_ □ ×

 **Editing a Site: Select an Affinity Image for “nSchool” site** 3 of 6

Select or enter image information. The image is displayed in the Gateway on the left side.  
Then click the Next arrow.

Image Name  
Gateway Elementary School

Description  
Gateway Elementary School

Alternative Text  
Gateway Elementary School


Image Usage Type  
Affinity Zones




File Name  
gateway\_ele\_layer.gif

Original File Name  
gateway\_ele\_layer.gif

Original File Date  
8/15/00

GUID  
{F9E8B190-6C6E-11D4-8E9D-0090279C6EE4}



The image would appear only after one is uploaded (except in the Edit Image version of this screen). But shouldn't this screen be "Edit an Image" rather than "Select an Image"?



## Editing a Site: Select User Types for “nSchool” site

4 of 6

Select the user types for which you want the site to appear. Then click the Next arrow.

All

- Student
  - Pre-K - 2
  - 3-5
  - 6-8
  - 9-12
- Parent
- Teacher
- Admin





## Editing a Site: Define Overrides for “nSchool” site

5 of 6

Select the overrides for which you want the site to appear. Overrides are used when something happens. Then click the Next arrow.

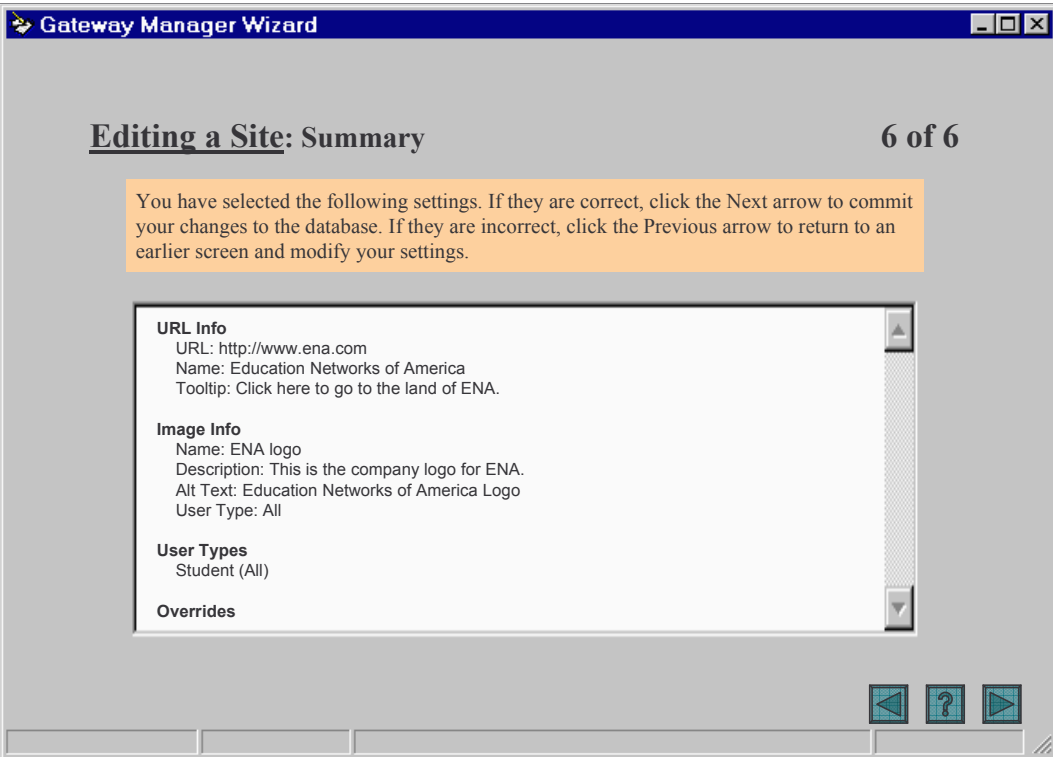


Primary

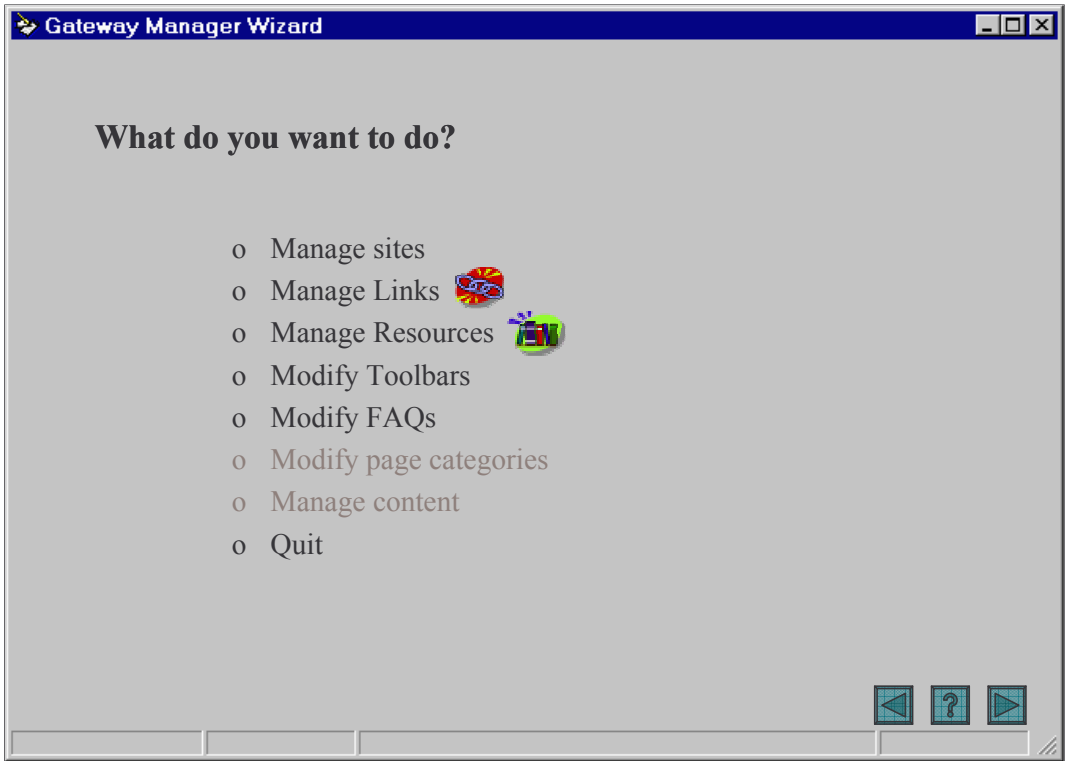


Secondary

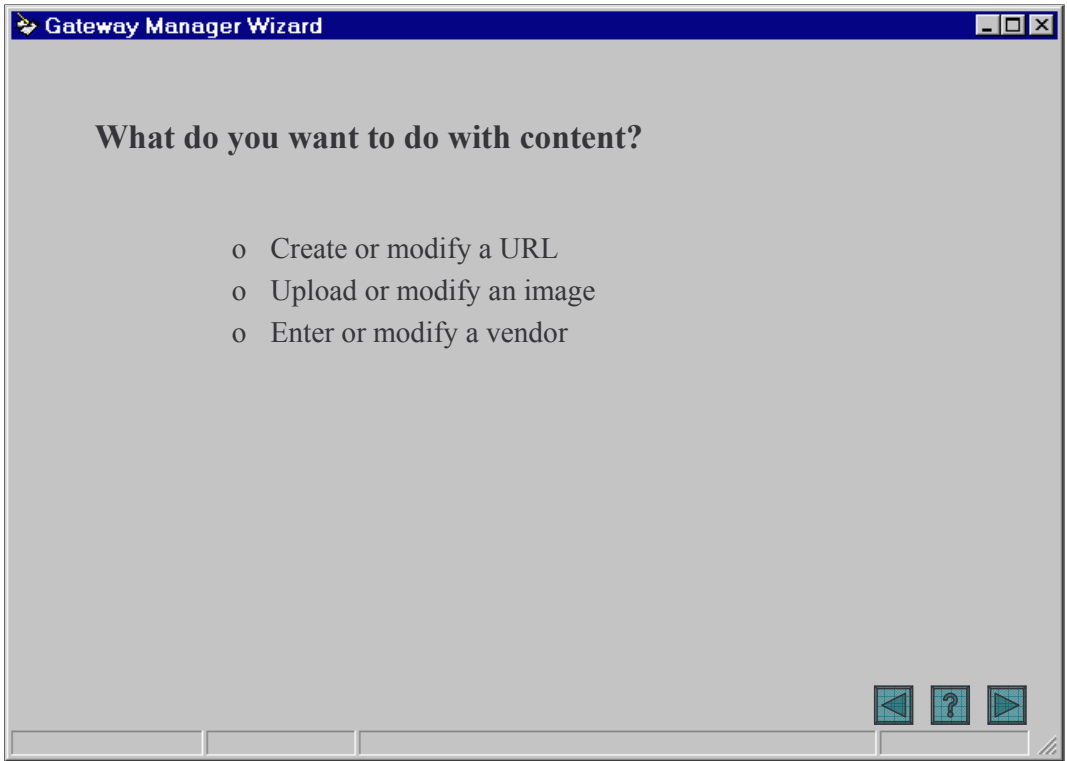




Should we have a hyperlink here for the URL? It might be useful to preview a link in my browser (as opposed to ENA Preview).



Or we could return to the sublevel screen: For example, “What do you want to do in Sites?” Also, the buttons could be action buttons: This could be the very first screen (with the Help screen giving the intro-speak), drop the radio buttons: This would save one click for the user.



Could cut the first option “View” option, since the next screen for either of the other options should be the view screen.

**Gateway Manager Wizard** \_ □ ×

 **Creating or Editing an Image** 1 of 1

Select or enter image information. The image is displayed in the Gateway on the left side.  
Then click the Next arrow.

Image Name  
Gateway Elementary School

Description  
Gateway Elementary School

Alternative Text  
Gateway Elementary School


Image Usage Type  
Affinity Zones


File Name  
gateway\_ele\_layer.gif

Original File Name  
gateway\_ele\_layer.gif

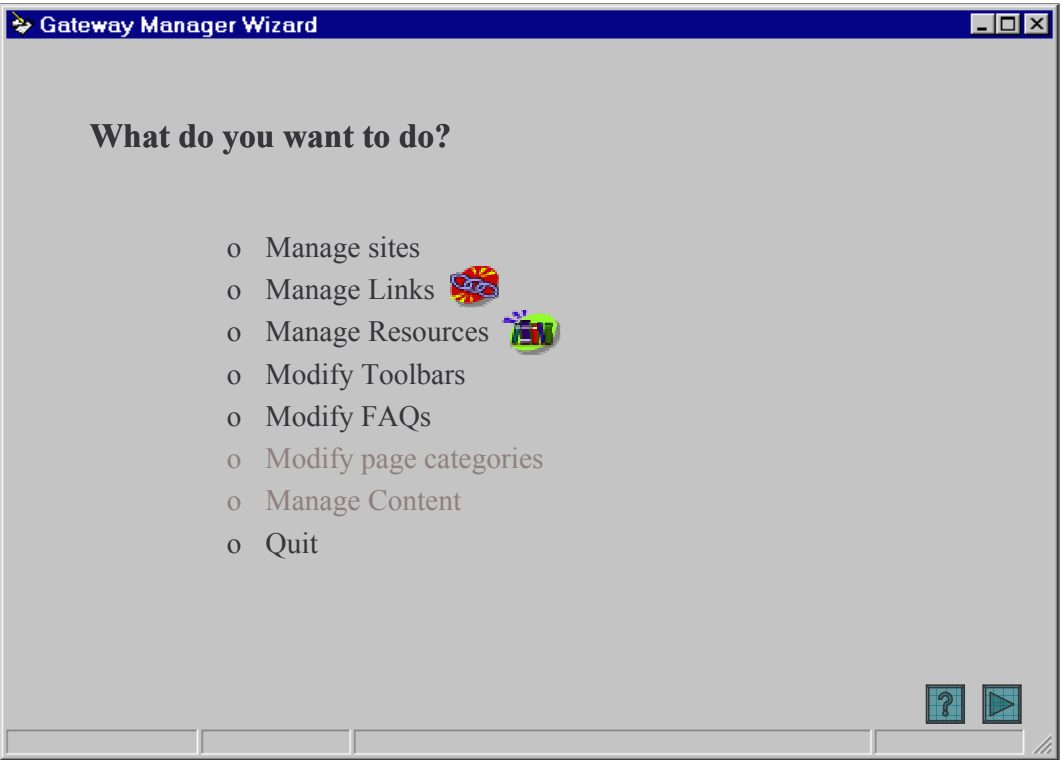
Original File Date  
8/15/00

GUID  
{F9E8B190-6C6E-11D4-8E9D-0090279C6EE4}

The image would appear only after one is uploaded (except in the Edit Image version of this screen).



Or we could return to the sublevel screen: For example, “What do you want to do in Sites?”